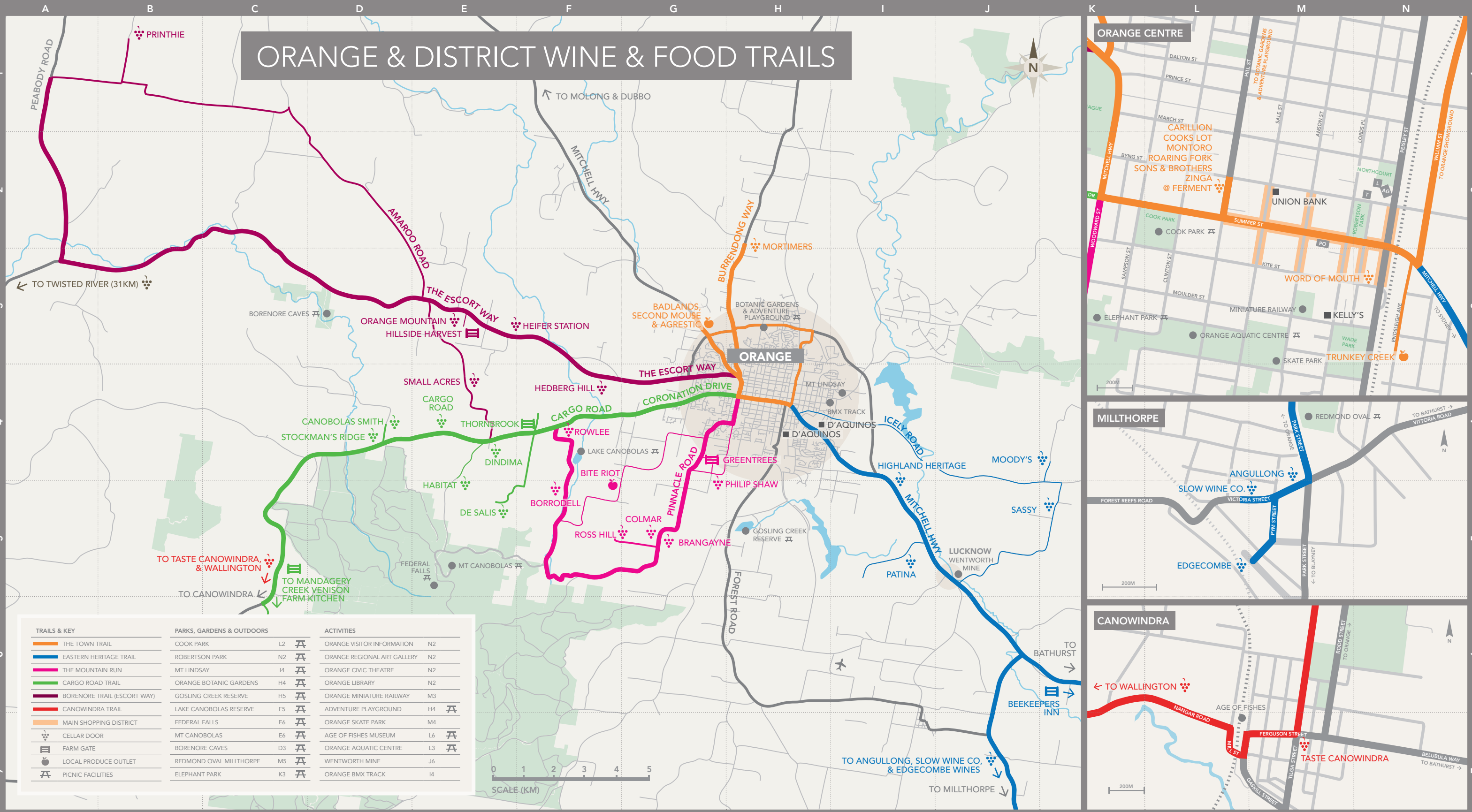
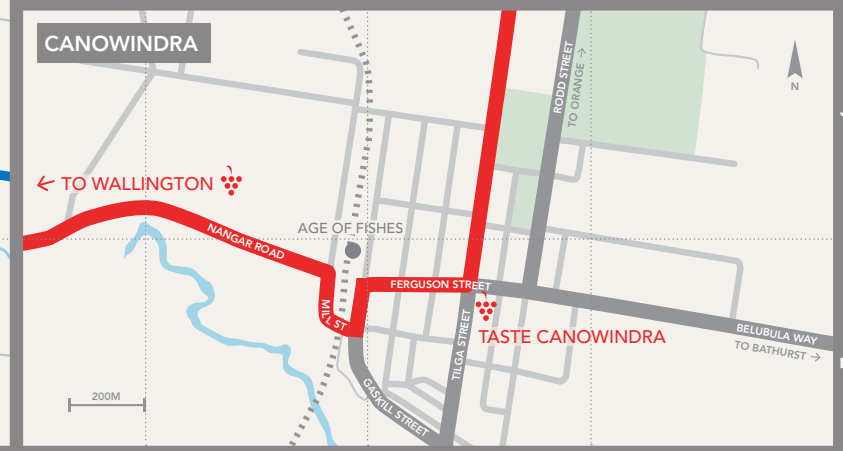
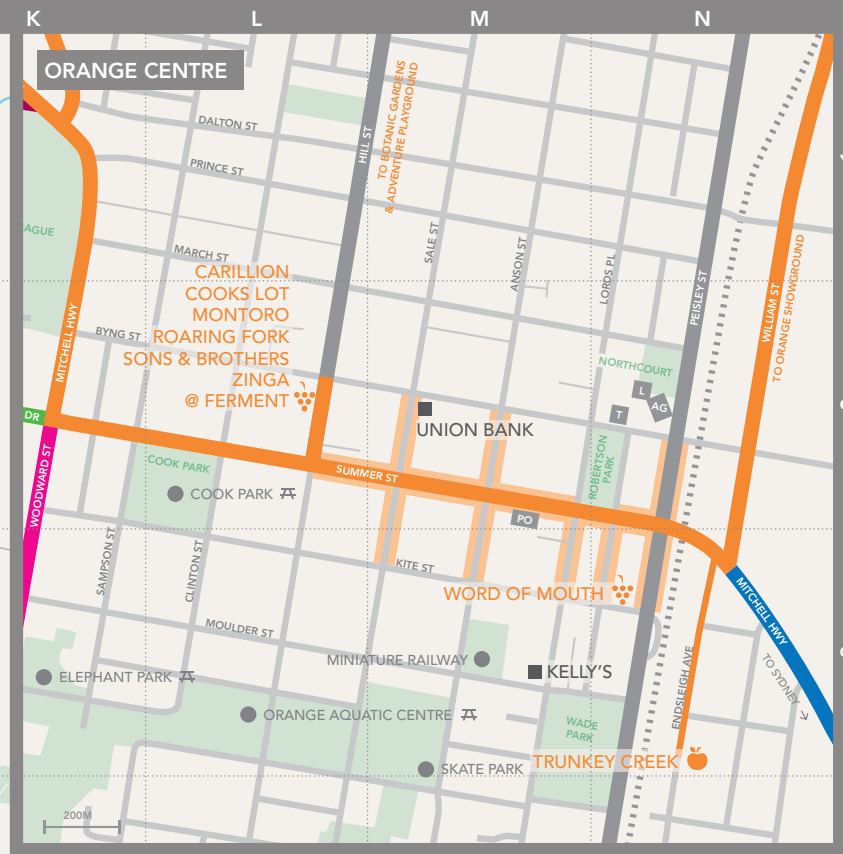


# ORANGE & DISTRICT WINE & FOOD TRAILS



TRAILS & KEY		PARKS, GARDENS & OUTDOORS		ACTIVITIES	
	THE TOWN TRAIL		COOK PARK L2		ORANGE VISITOR INFORMATION N2
	EASTERN HERITAGE TRAIL		ROBERTSON PARK N2		ORANGE REGIONAL ART GALLERY N2
	THE MOUNTAIN RUN		MT LINDSAY I4		ORANGE CIVIC THEATRE N2
	CARGO ROAD TRAIL		ORANGE BOTANIC GARDENS H4		ORANGE LIBRARY N2
	BORENORE TRAIL (ESCORT WAY)		GOSLING CREEK RESERVE H5		ORANGE MINIATURE RAILWAY M3
	CANOWINDRA TRAIL		LAKE CANOBOLAS RESERVE F5		ADVENTURE PLAYGROUND H4
	MAIN SHOPPING DISTRICT		FEDERAL FALLS E6		ORANGE SKATE PARK M4
	CELLAR DOOR		MT CANOBOLAS E6		AGE OF FISHES MUSEUM L6
	FARM GATE		BORENORE CAVES D3		ORANGE AQUATIC CENTRE L3
	LOCAL PRODUCE OUTLET		REDMOND OVAL MILLTHORPE M5		WENTWORTH MINE J6
	PICNIC FACILITIES		ELEPHANT PARK K3		ORANGE BMX TRACK I4



THE TOWN TRAIL		THE TOWN TRAIL		EASTERN HERITAGE TRAIL		THE MOUNTAIN RUN (PINNACLE ROAD)		CARGO ROAD TRAIL		THE BORENORE TRAIL (THE ESCORT WAY)		CANOWINDRA TRAIL	
MAP	TEL	MAP	TEL	MAP	TEL	MAP	TEL	MAP	TEL	MAP	TEL	MAP	TEL
	Carillion Wines		Word of Mouth Wines		Moody's Wines		Philip Shaw Wines		De Salis Wines		Hedberg Hill Wines		Taste Canowindra
	Cooks Lot		Mortimers of Orange		Sassy Wines		Brangayne of Orange		Dindima Wines		Orange Mountain Wines		Wallington
	Montoro Wines		Trunkey Bacon & Pork		Patina		Colmar Estate		Habitat Vineyard		Small Acres Cyder		
	Roaring Fork Wines		Badlands Brewery		Highland Heritage Estate		Ross Hill Wines		Cargo Road Winery		Heifer Station		
	Sons & Brothers		The Agrestic Grocer		Angullong		Borrodell Vineyard		Canobolas Smith Wines		Printhie Wines		
	Zinga Wines		Second Mouse Cheese Co.		Slow Wine Co.		Rowlee		Stockman's Ridge		Hillside Harvest		
	Ferment				Edgcombe Wines		Greentrees Gourmet Preserves		Thornbrook Orchard				
					The Beekeepers Inn		Bite Riot		Mandagery Creek Venison Farm Kitchen				

For further information please visit [www.brandorange.com.au](http://www.brandorange.com.au) or call local visitor information centres: Orange 1800 069 466 / Blayney 02 6368 3534 / Cabonne 02 6344 1008.